

Cityscape Residences

Description

Introducing our new project, ideally situated in the vibrant heart of Paphos, offering unparalleled convenience and access to essential amenities. This development comprises a total of 12 meticulously designed apartments, catering to various needs with four spacious 2-bedroom apartments and eight stylish 1-bedroom units.

Location:
Nestled in the bustling city center, this project places you at the epicenter of urban living. You'll find yourself just moments away from the city's key attractions, including shops, restaurants, entertainment, and more. The convenience of city life is at your doorstep.

Apartments:
2-Bedroom Units: These generous living spaces are perfect for families or those desiring extra room. With two bedrooms, they provide ample space for comfort and flexibility.
1-Bedroom Units: These well-appointed apartments are an excellent choice for singles or couples. They offer a cozy and inviting living environment.

Features:
Each apartment is thoughtfully designed to maximize space and comfort. You'll find high-quality finishes, modern amenities, and an abundance of natural light. This project exemplifies the perfect blend of contemporary design and urban living.

If you're looking for a stylish and convenient lifestyle in the heart of Paphos, our new project is the answer.



The 3D images provided are samples and do not represent the final result of the project.



Amenities



Beach
3.5 km



Education
450 m



Supermarket
1 km



Medical Care
300 m



Airport
15 km



Restaurant
150 m



Hotel
13 km



Pharmacy
100 m



ATM
450 m



Kiosk
400 m

Specifications



Plot Area	532 m2
Floor Levels	4
Covered Internal Area	101, 201, 301, 401 50 m2 102, 202, 302, 402 50 m2 103, 203, 303, 403 77 m2
Covered Veranda	101, 201, 301, 401 11 m2 102, 202, 302, 402 4 m2 103, 203, 303, 403 9 m2
Parking Space	12 x Private 1 x Guest 1 x AMEA
Bedrooms	101, 201, 301, 401 1 bed 102, 202, 302, 402 1 bed 103, 203, 303, 403 2 bed
Bathroom	101, 201, 301, 401 1 bath 102, 202, 302, 402 1 bath 103, 203, 303, 403 2 bath



3D Views Exterior

The 3D images provided are samples and do not represent the final result of the project.

3D Views Exterior

The 3D images provided are samples and do not represent the final result of the project.





3D Views Interior 1 BDR

The 3D images provided are samples and do not represent the final result of the project.

3D Views Interior

1 BDR

The 3D images provided are samples and do not represent the final result of the project.





3D Views Interior

2 BDR

The 3D images provided are samples and do not represent the final result of the project.

3D Views Interior

2 BDR

The 3D images provided are samples and do not represent the final result of the project.





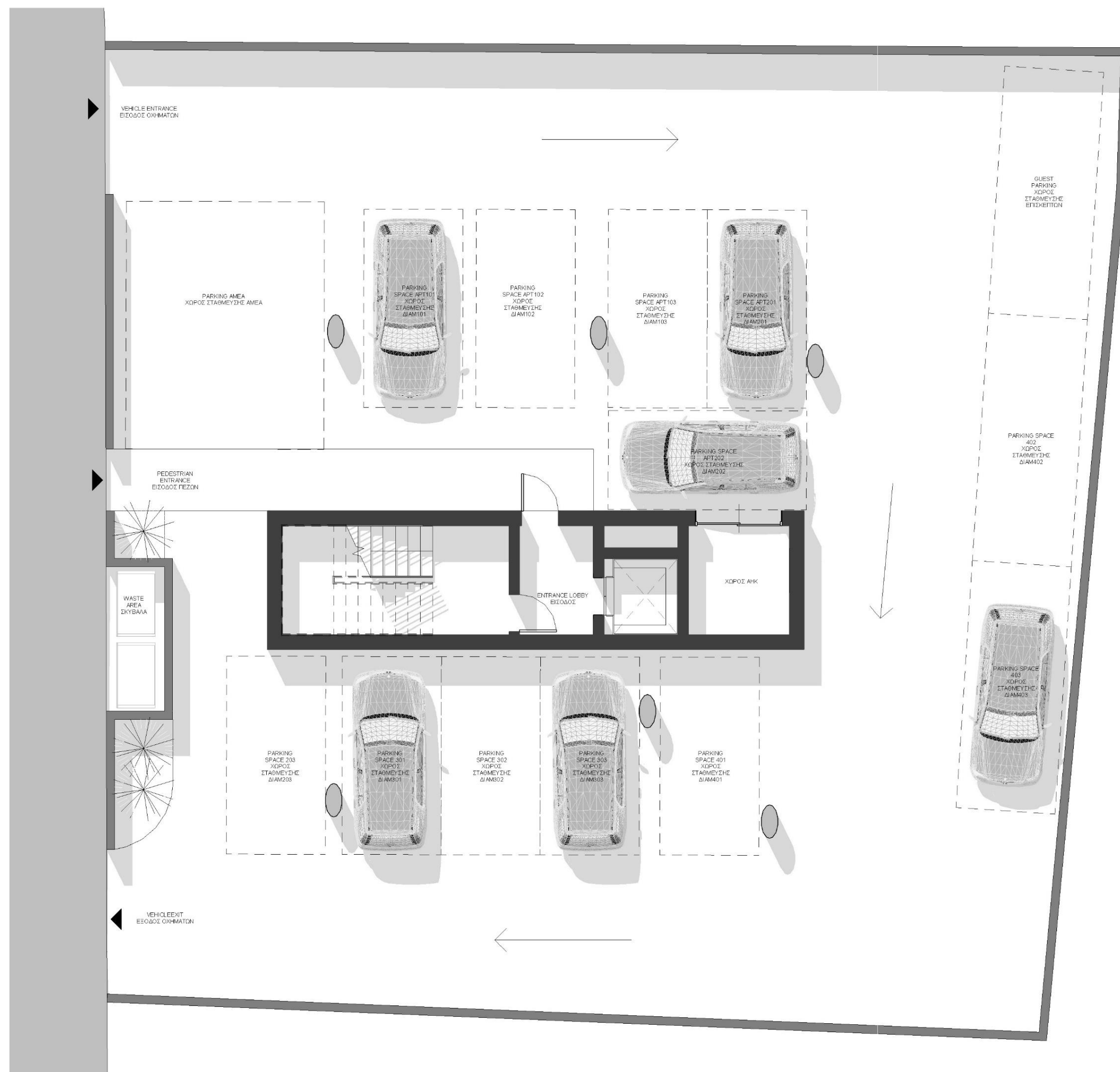
3D Views Interior

The 3D images provided are samples and do not represent the final result of the project.

3D Views Interior

The 3D images provided are samples and do not represent the final result of the project.





Ground Floor



First Floor



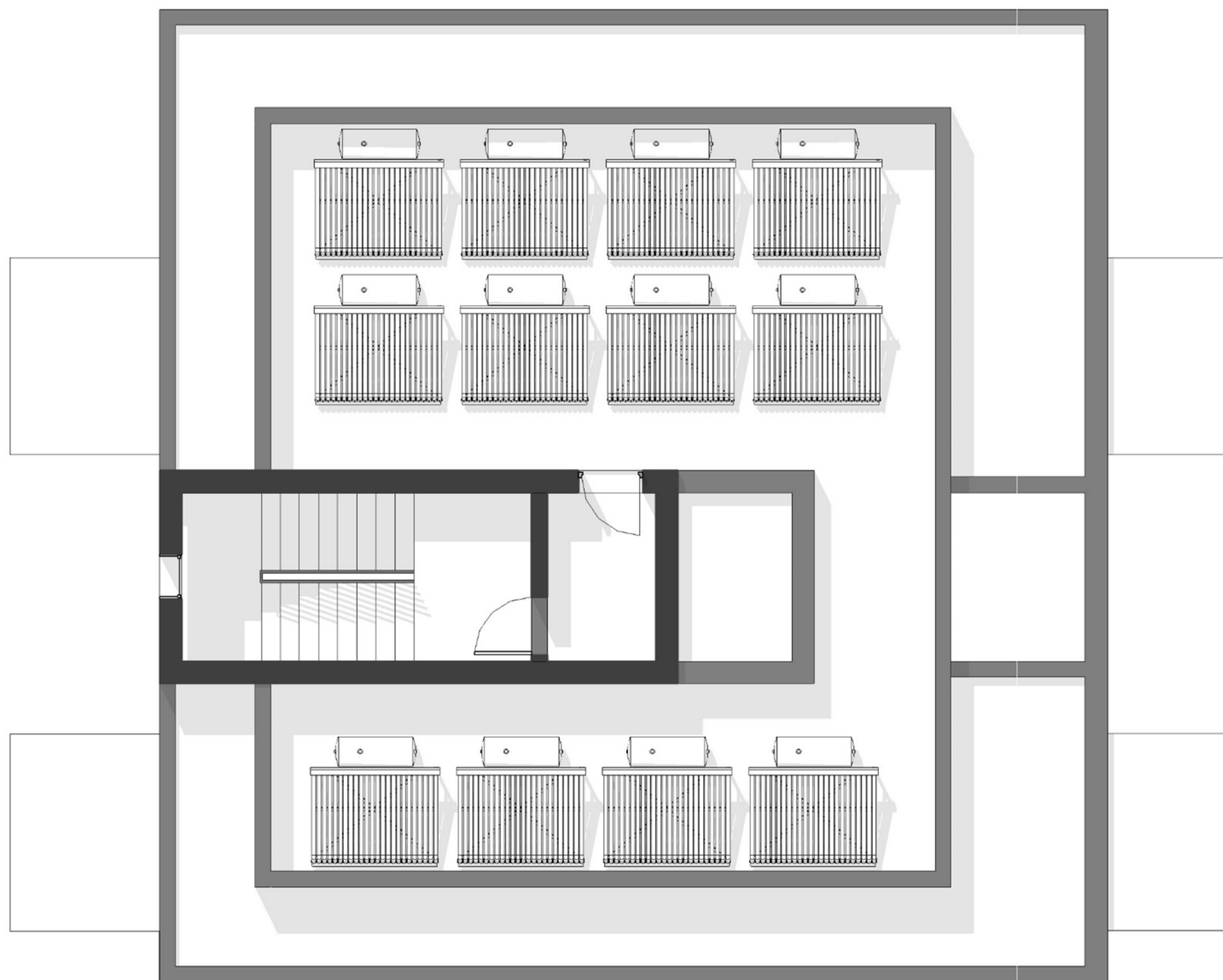
Second Floor



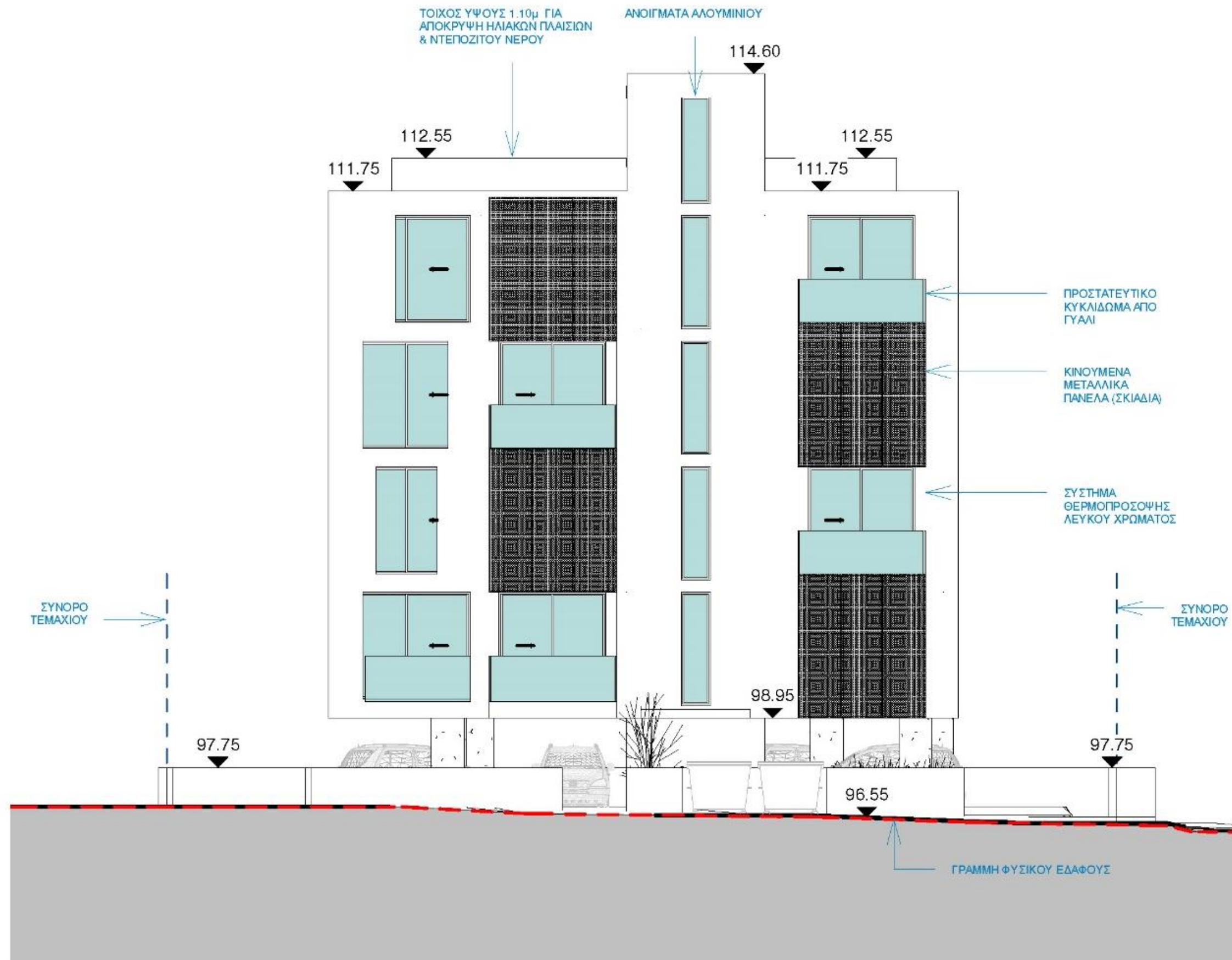
Third Floor



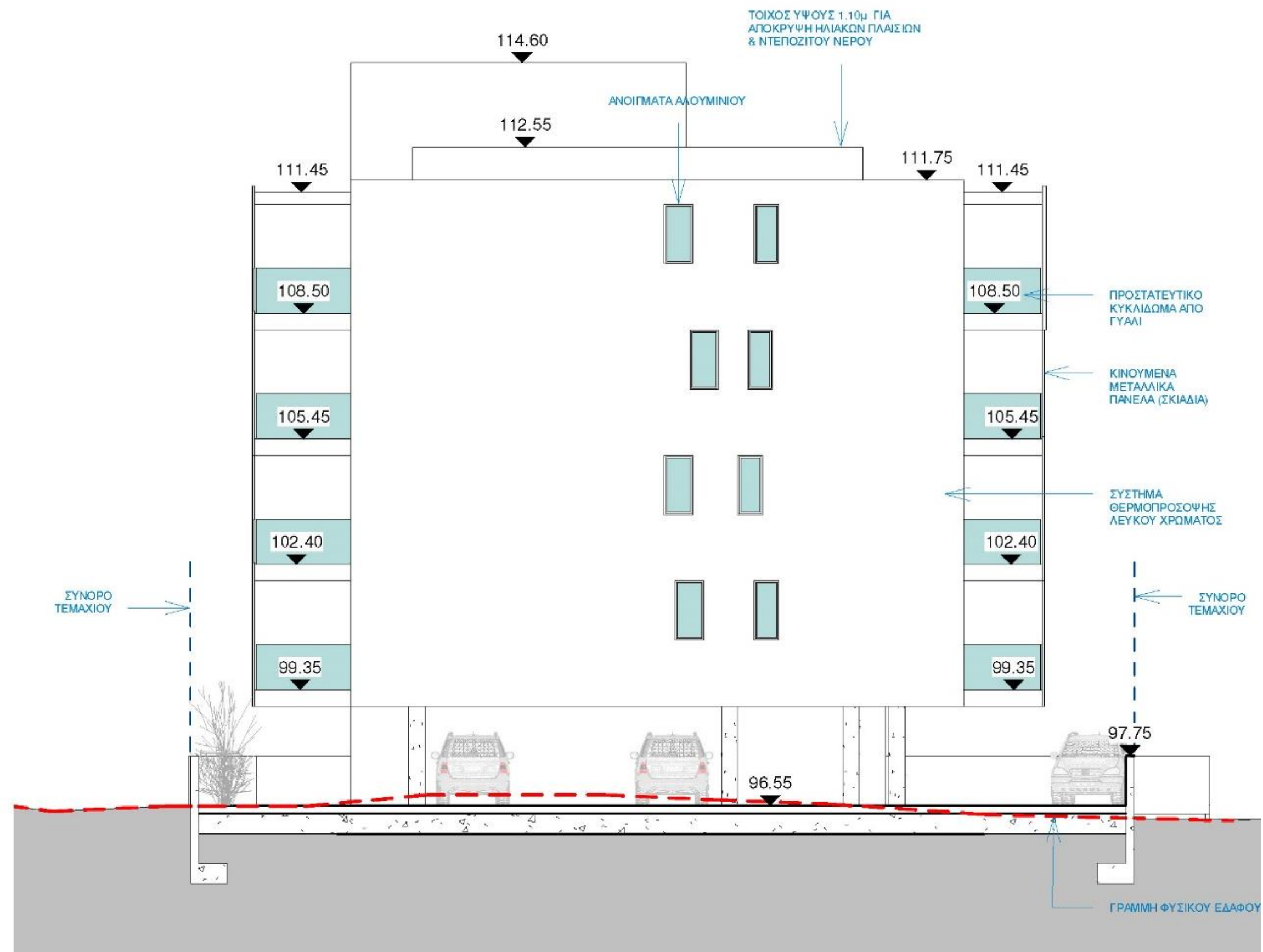
Fourth Floor



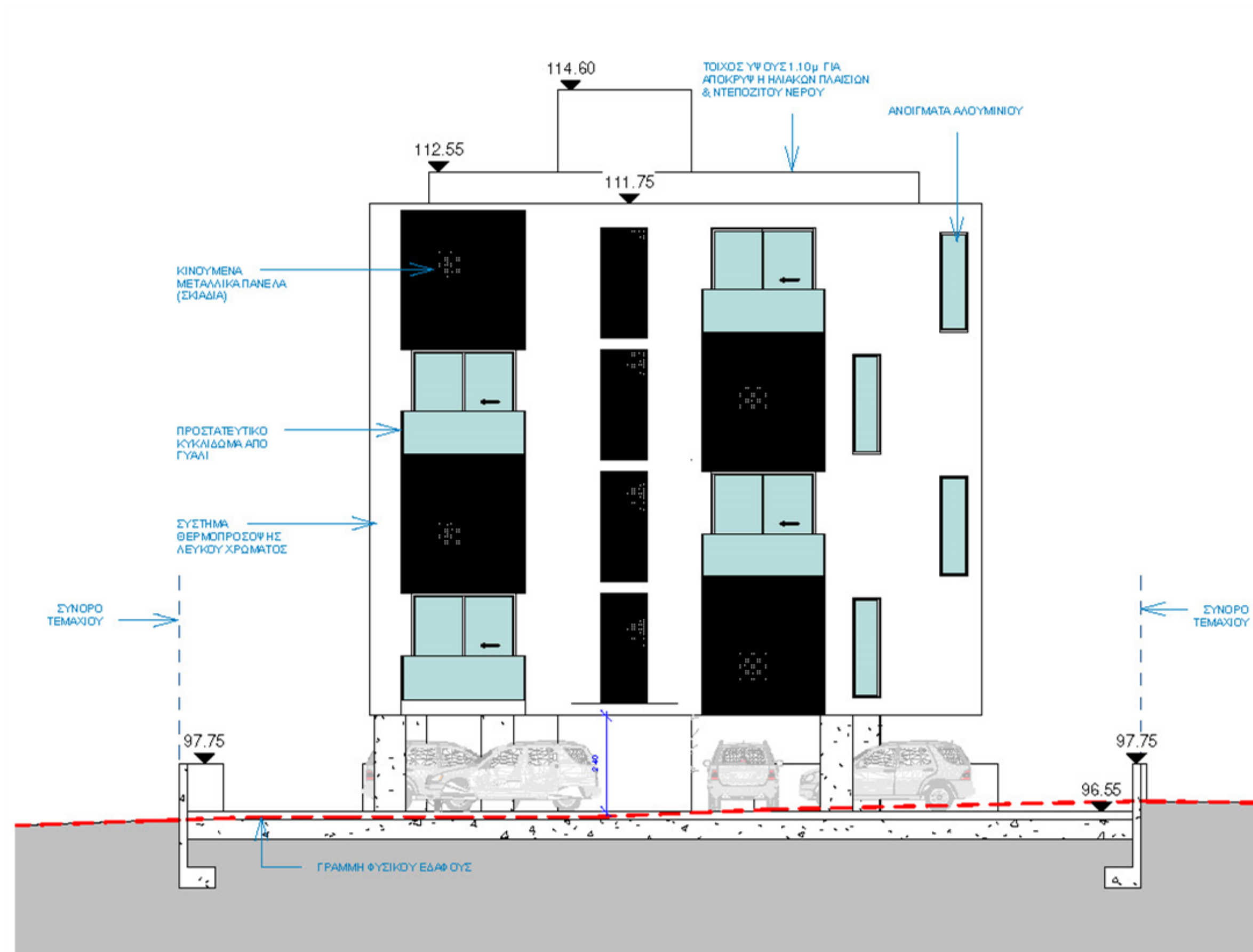
Roof Plan



**Northwest
Elevation**
Front View

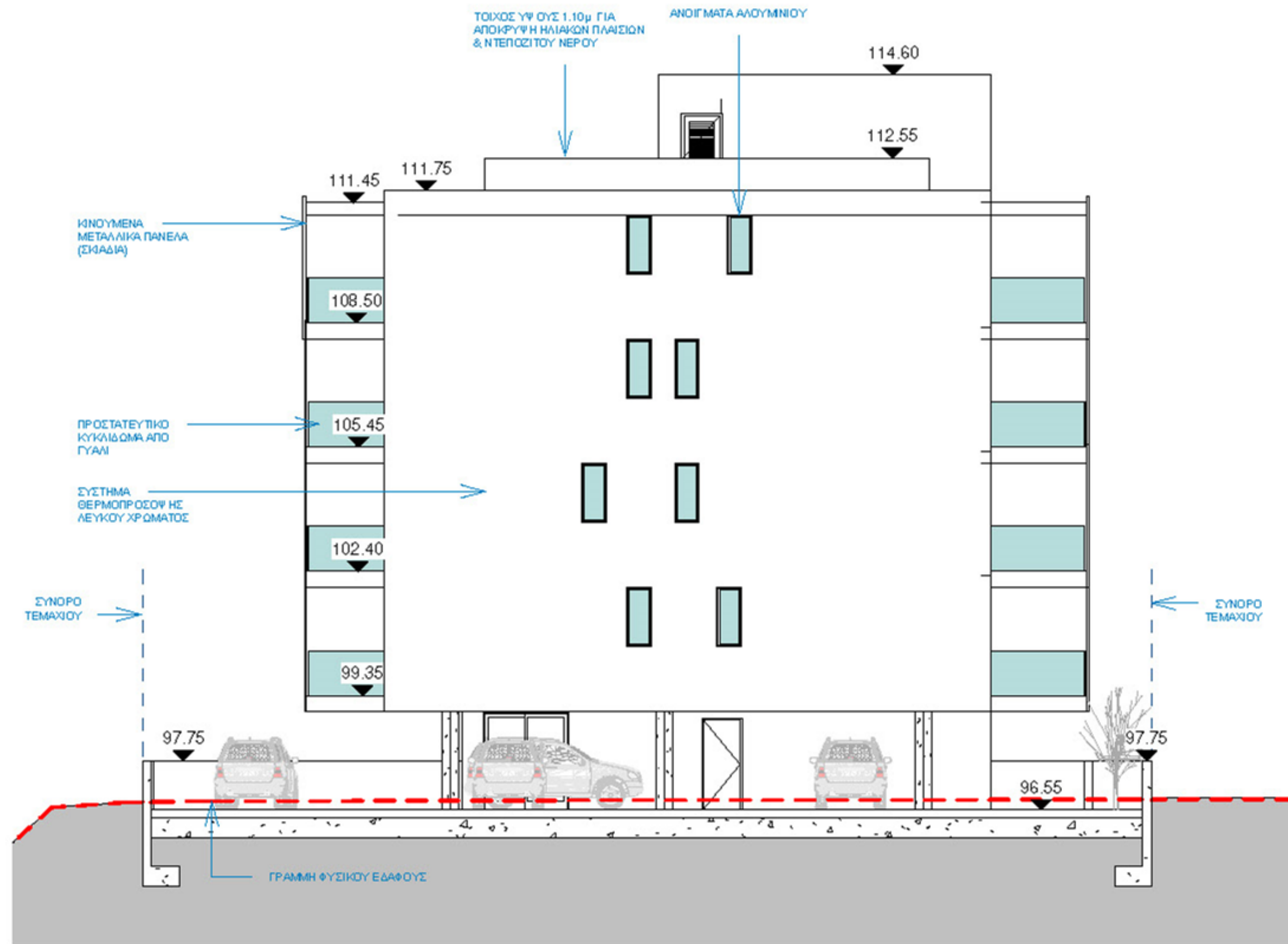


Southwest
Elevation



Southeast Elevation

Rear View



**Northeast
Elevation**